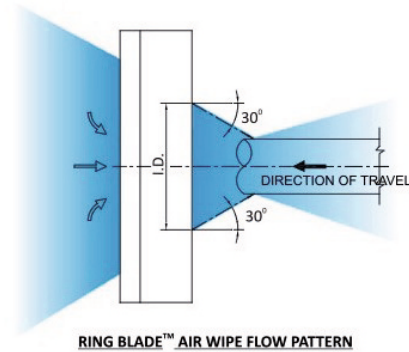
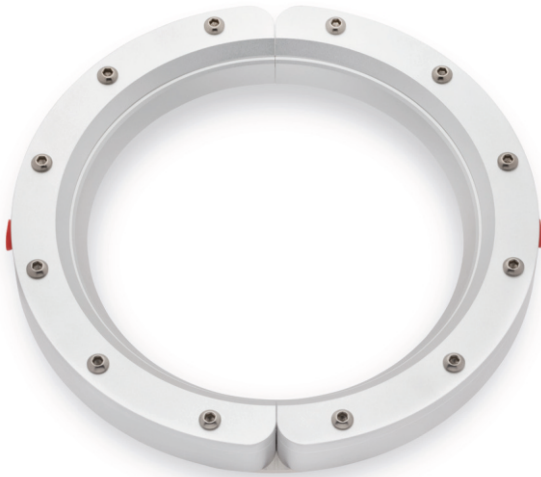


## AIR WIPE AIR-AW11 ØINT. 279MM

AirMasters air wipes are ideal to clean, cool and dry cables, pipes, extrusions, hoses, wires and ropes. They are easy to mount and maintain and reduce both compressed air consumption and noise levels. Producing a "laminar" flow of air along its 360° angle using the Coanda effect which entrains a large volume of air from the surrounding area along with the small amount of compressed air to produce an output flow up to 30 times the initial one. Our air wipes are available in anodised aluminium, steel 304 and steel 316L. All models are provided with stainless steel screws and stainless steel shims.



RING BLADE™ AIR WIPE FLOW PATTERN

Internal diameter	279 mm
External diameter	349 mm
Dimensions	349 mm x 29 mm
Shims	Stainless Steel
Air consumption at 5 Bar	203 Nm <sup>3</sup> /h
Air Amplification	30:1
Sound level at 5 Bar	89 dB(A)
Connection type	Female
Side connections	1/4" x 2
Blowing pattern	Circular
Max operating pressure	10 Bar

[www.air-masters.eu](http://www.air-masters.eu) [info@air-masters.eu](mailto:info@air-masters.eu) Tel. Tel. +44 8006893125