

Ring-Blade Air Wipe System

The **Ring-Blade Air Wipe System** produces a “laminar” Flow of air along its 360° angle using the “Coanda” effect which “entrains” a large volume of air from the surrounding area along with the small amount of compressed air from the **Ring-Blade Air Wipe System air-saver wiper-blade** to produce an output flow up to 30 times. Pay back on compressed air savings can be as soon as a few weeks in some applications when compared to nozzle “rings” or simple annular slots used by other air wiping systems.

Air Wipe or Ring Blade - Circular Air Knife blow off, clean, cool and dry cables, pipes, extrusions, hoses, wires and ropes. **Air Wipe or Ring Blade - Circular Air Knife** is easy to mount and maintain and reduces both compressed air consumption and noise levels. **Air Wipe or Ring Blade - Circular Air Knife** is available in aluminium or stainless steel 316L.

Features:

The **Ring-Blade Air Wipe System** is made of coated aluminium & Stainless Steel (SS304 & SS316L) to provide even **air flow** 360° around the parts.

- Designed as two pieces hinged together to open and close around the part.
- Utilizes the "Coanda" effect to **amplify air flow**.
- Instant on-off with no moving parts, no electricity or explosion hazard.

Benefits:

- Even blow off around the part, light in weight and compact.
- Easy to install and maintain and allows removal of a continuous piece.
- Reduced compressed air use for energy savings plus lower noise levels.
- Maintenance free with output easily controlled, safe to use.

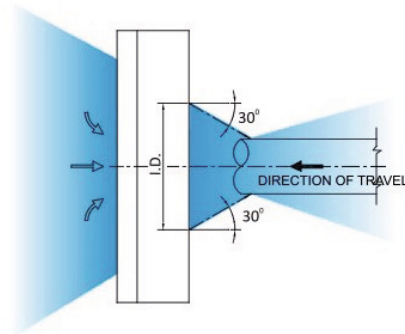
Ring-Blade Compressed Air Wipe Systems are available in 12 standard (inside) diameters: 3/8", 1/2", 1", 2", 3", 4", 5", 6", 7", 9", 11". Special diameters are also available on special request. **Ring-Blade Compressed Air Wipe Systems** come with a standard .002" outlet gap which will work for 90% of all applications encountered. If greater force is required, a second .004" shim may be installed to open the gap for greater flow. Material of construction: Coated Aluminium & Stainless Steel

MODELS Specification:

Coated Aluminium (Standard Application)	Stainless Steel (High Temperature Application)		Size	Sound Level	Air consumption at 72.5 PSI
	SS304	SS316L			
AIR -AW099	-	-	3/8" (9 mm)	67 dB(A)	7.9 SCFM
AIR-AW00	AIR-AW00S	AIR-AW00-316L	1/2" (12.7mm)	73 dB(A)	9.33 SCFM
AIR-AW01	AIR-AW01S	AIR-AW01-316L	1" (25mm)	76 dB(A)	19.91 SCFM
AIR-AW15	AIR-AW15S	AIR-AW15-316L	1-1/2" (40mm)	76 dB(A)	23.65 SCFM
AIR-AW02	AIR-AW02S	AIR-AW02-316L	2" (51mm)	77 dB(A)	26.14 SCFM
AIR-AW03	AIR-AW03S	AIR-AW03-316L	3" (76mm)	78 dB(A)	31.12 SCFM
AIR-AW04	AIR-AW04S	AIR-AW04-316L	4" (102mm)	80 dB(A)	46.67 SCFM
AIR-AW05	AIR-AW05S	AIR-AW05-316L	5" (127mm)	82 dB(A)	56.01 SCFM
AIR-AW06	AIR-AW06S	AIR-AW06-316L	6" (153mm)	83 dB(A)	74.68 SCFM
AIR-AW07	AIR-AW07S	AIR-AW07-316L	7" (178mm)	85 dB(A)	80.9 SCFM
AIR-AW09	AIR-AW09S	AIR-AW09-316L	9" (229mm)	87 dB(A)	102.68 SCFM
AIR-AW11	AIR-AW11S	AIR-AW11-316L	11" (279mm)	89 dB(A)	126.33 SCFM

AIR WIPE AIR-AW099 ØINT. 9MM

AirMasters air wipes are ideal to clean, cool and dry cables, pipes, extrusions, hoses, wires and ropes. They are easy to mount and maintain and reduce both compressed air consumption and noise levels. Producing a "laminar" flow of air along its 360° angle using the Coanda effect which entrains a large volume of air from the surrounding area along with the small amount of compressed air to produce an output flow up to 30 times the initial one. Our air wipes are available in anodised aluminium, steel 304 and steel 316L. All models are provided with stainless steel screws and stainless steel shims.

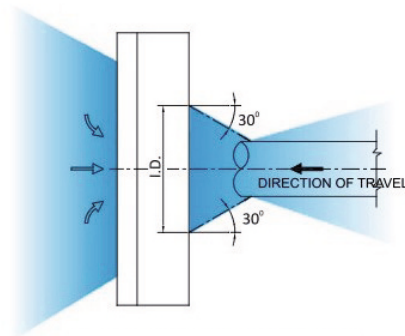


Internal diameter	9.60 mm
External diameter	70 mm
Dimensions	70 mm x 26 mm
Shims	Stainless Steel
Air consumption at 5 Bar	12.7 Nm ³ /h
Air Amplification	30:1
Sound level at 5 Bar	67 dB(A)
Connection type	Female
Side connection without tube 	1/4" x 2
Side connection with tube 	1/4"
Blowing pattern	Circular
Max operating pressure	10 Bar

www.air-masters.eu info@air-masters.eu Tel. +44 8006893125

AIR WIPE AIR-AW00 ØINT. 12.7MM

AirMasters air wipes are ideal to clean, cool and dry cables, pipes, extrusions, hoses, wires and ropes. They are easy to mount and maintain and reduce both compressed air consumption and noise levels. Producing a "laminar" flow of air along its 360° angle using the Coanda effect which entrains a large volume of air from the surrounding area along with the small amount of compressed air to produce an output flow up to 30 times the initial one. Our air wipes are available in anodised aluminium, steel 304 and steel 316L. All models are provided with stainless steel screws and stainless steel shims.

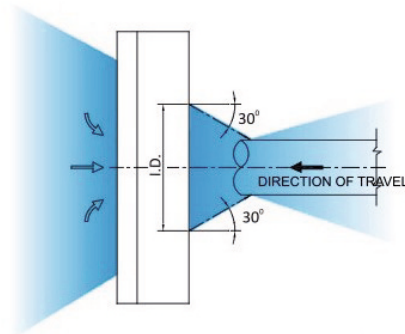


Internal diameter	12.7 mm
External diameter	82.5 mm
Dimensions	82.5 mm x 25 mm
Shims	Stainless Steel
Air consumption at 5 Bar	15 Nm ³ /h
Air Amplification	30:1
Sound level at 5 Bar	73 dB(A)
Connection type	Female
Side connection without tube 	1/4" x 2
Side connection with tube 	1/4"
Blowing pattern	Circular
Max operating pressure	10 Bar

www.air-masters.eu info@air-masters.eu Tel. +44 8006893125

AIR WIPE AIR-AW01 ØINT. 25 MM

AirMasters air wipes are ideal to clean, cool and dry cables, pipes, extrusions, hoses, wires and ropes. They are easy to mount and maintain and reduce both compressed air consumption and noise levels. Producing a "laminar" flow of air along its 360° angle using the Coanda effect which entrains a large volume of air from the surrounding area along with the small amount of compressed air to produce an output flow up to 30 times the initial one. Our air wipes are available in anodised aluminium, steel 304 and steel 316L. All models are provided with stainless steel screws and stainless steel shims.

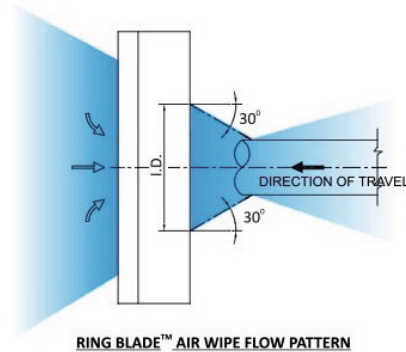


Internal diameter	25 mm
External diameter	95 mm
Dimensions	95 mm x 25 mm
Shims	Stainless Steel
Air consumption at 5 Bar	32 Nm ³ /h
Air Amplification	30:1
Sound level at 5 Bar	76 dB(A)
Connection type	Female
Side connection without tube 	1/4" x 2
Side connection with tube 	1/4"
Blowing pattern	Circular
Max operating pressure	10 Bar

www.air-masters.eu info@air-masters.eu Tel. +44 8006893125

AIR WIPE AIR-AW15 ØINT. 40 MM

AirMasters air wipes are ideal to clean, cool and dry cables, pipes, extrusions, hoses, wires and ropes. They are easy to mount and maintain and reduce both compressed air consumption and noise levels. Producing a "laminar" flow of air along its 360° angle using the Coanda effect which entrains a large volume of air from the surrounding area along with the small amount of compressed air to produce an output flow up to 30 times the initial one. Our air wipes are available in anodised aluminium, steel 304 and steel 316L. All models are provided with stainless steel screws and stainless steel shims.

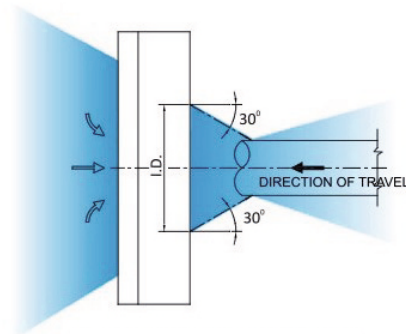


Internal diameter	40 mm
External diameter	103 mm
Dimensions	103 mm x 25.9 mm
Shims	Stainless Steel
Air consumption at 5 Bar	38 Nm ³ /h
Air Amplification	30:1
Sound level at 5 Bar	76 dB(A)
Connection type	Female
Side connection without tube 	1/4" x 2
Side connection with tube 	1/4"
Blowing pattern	Circular
Max operating pressure	10 Bar

www.air-masters.eu info@air-masters.eu Tel. +44 8006893125

AIR WIPE AIR-AW02 ØINT. 51 MM

AirMasters air wipes are ideal to clean, cool and dry cables, pipes, extrusions, hoses, wires and ropes. They are easy to mount and maintain and reduce both compressed air consumption and noise levels. Producing a "laminar" flow of air along its 360° angle using the Coanda effect which entrains a large volume of air from the surrounding area along with the small amount of compressed air to produce an output flow up to 30 times the initial one. Our air wipes are available in anodised aluminium, steel 304 and steel 316L. All models are provided with stainless steel screws and stainless steel shims.

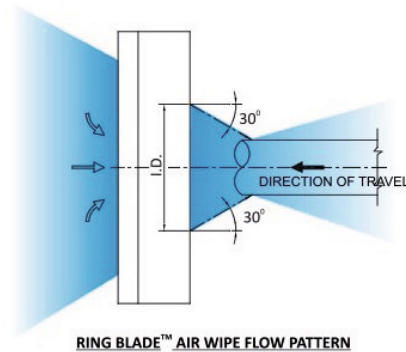


Internal diameter	51 mm
External diameter	121 mm
Dimensions	121 mm x 25.9 mm
Shims	Stainless Steel
Air consumption at 5 Bar	42 Nm ³ /h
Air Amplification	30:1
Sound level at 5 Bar	77 dB(A)
Connection type	Female
Side connection without tube 	1/4" x 2
Side connection with tube 	1/4"
Blowing pattern	Circular
Max operating pressure	10 Bar

www.air-masters.eu info@air-masters.eu Tel. +44 8006893125

AIR WIPE AIR-AW03 ØINT. 76 MM

AirMasters air wipes are ideal to clean, cool and dry cables, pipes, extrusions, hoses, wires and ropes. They are easy to mount and maintain and reduce both compressed air consumption and noise levels. Producing a "laminar" flow of air along its 360° angle using the Coanda effect which entrains a large volume of air from the surrounding area along with the small amount of compressed air to produce an output flow up to 30 times the initial one. Our air wipes are available in anodised aluminium, steel 304 and steel 316L. All models are provided with stainless steel screws and stainless steel shims.

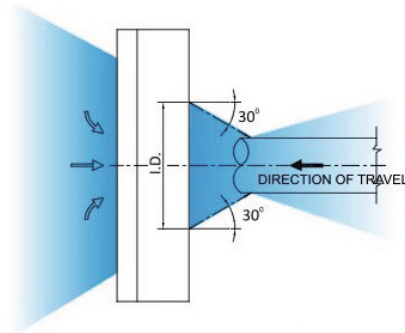


Internal diameter	76 mm
External diameter	146 mm
Dimensions	146 mm x 25.9 mm
Shims	Stainless Steel
Air consumption at 5 Bar	50 Nm ³ /h
Air Amplification	30:1
Sound level at 5 Bar	78 dB(A)
Connection type	Female
Side connection without tube 	1/4" x 2
Side connection with tube 	1/4"
Blowing pattern	Circular
Max operating pressure	10 Bar

www.air-masters.eu info@air-masters.eu Tel. +44 8006893125

AIR WIPE AIR-AW04 ØINT.102 MM

AirMasters air wipes are ideal to clean, cool and dry cables, pipes, extrusions, hoses, wires and ropes. They are easy to mount and maintain and reduce both compressed air consumption and noise levels. Producing a "laminar" flow of air along its 360° angle using the Coanda effect which entrains a large volume of air from the surrounding area along with the small amount of compressed air to produce an output flow up to 30 times the initial one. Our air wipes are available in anodised aluminium, steel 304 and steel 316L. All models are provided with stainless steel screws and stainless steel shims.

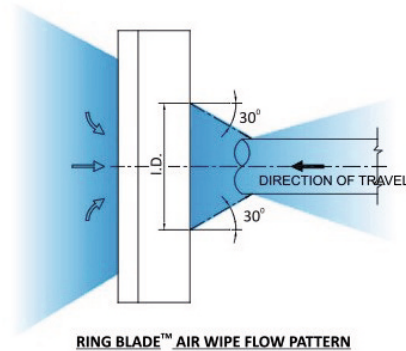


Internal diameter	102 mm
External diameter	172 mm
Dimensions	172 mm x 25.9 mm
Shims	Stainless Steel
Air consumption at 5 Bar	75 Nm ³ /h
Air Amplification	30:1
Sound level at 5 Bar	80 dB(A)
Connection type	Female
Side connection without tube 	1/4" x 2
Side connection with tube 	1/4"
Blowing pattern	Circular
Max operating pressure	10 Bar

www.air-masters.eu info@air-masters.eu Tel. +44 8006893125

AIR WIPE AIR-AW05 ØINT. 127MM

AirMasters air wipes are ideal to clean, cool and dry cables, pipes, extrusions, hoses, wires and ropes. They are easy to mount and maintain and reduce both compressed air consumption and noise levels. Producing a "laminar" flow of air along its 360° angle using the Coanda effect which entrains a large volume of air from the surrounding area along with the small amount of compressed air to produce an output flow up to 30 times the initial one. Our air wipes are available in anodised aluminium, steel 304 and steel 316L. All models are provided with stainless steel screws and stainless steel shims.

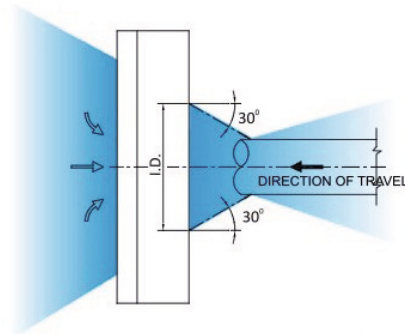


Internal diameter	127 mm
External diameter	197 mm
Dimensions	197 mm x 29 mm
Shims	Stainless Steel
Air consumption at 5 Bar	90 Nm ³ /h
Air Amplification	30:1
Sound level at 5 Bar	82 dB(A)
Connection type	Female
Side connection without tube 	1/4" x 2
Side connection with tube 	1/4"
Blowing pattern	Circular
Max operating pressure	10 Bar

www.air-masters.eu info@air-masters.eu Tel. +44 8006893125

AIR WIPE AIR-AW06 ØINT. 153 MM

AirMasters air wipes are ideal to clean, cool and dry cables, pipes, extrusions, hoses, wires and ropes. They are easy to mount and maintain and reduce both compressed air consumption and noise levels. Producing a "laminar" flow of air along its 360° angle using the Coanda effect which entrains a large volume of air from the surrounding area along with the small amount of compressed air to produce an output flow up to 30 times the initial one. Our air wipes are available in anodised aluminium, steel 304 and steel 316L. All models are provided with stainless steel screws and stainless steel shims.

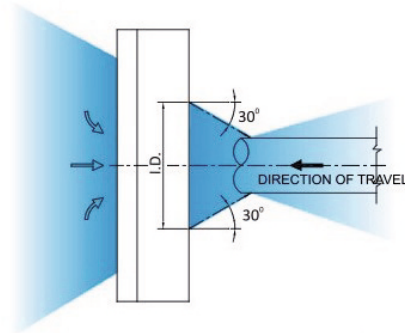
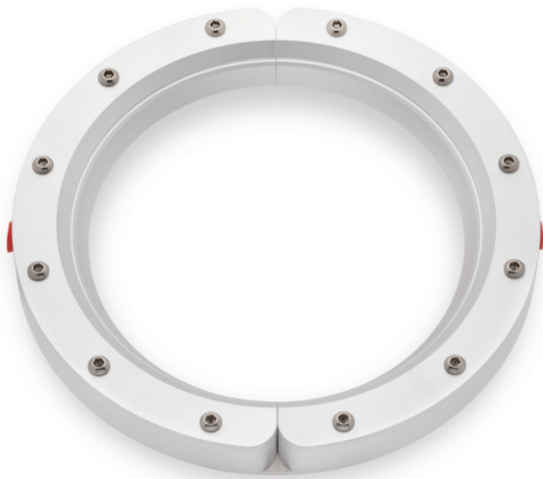


Internal diameter	153 mm
External diameter	222 mm
Dimensions	222 mm x 29.5 mm
Shims	Stainless Steel
Air consumption at 5 Bar	120 Nm ³ /h
Air Amplification	30:1
Sound level at 5 Bar	83 dB(A)
Connection type	Female
Side connection without tube 	1/4" x 2
Side connection with tube 	1/4"
Blowing pattern	Circular
Max operating pressure	10 Bar

www.air-masters.eu info@air-masters.eu Tel. +44 8006893125

AIR WIPE AIR-AW07 ØINT. 178MM

AirMasters air wipes are ideal to clean, cool and dry cables, pipes, extrusions, hoses, wires and ropes. They are easy to mount and maintain and reduce both compressed air consumption and noise levels. Producing a "laminar" flow of air along its 360° angle using the Coanda effect which entrains a large volume of air from the surrounding area along with the small amount of compressed air to produce an output flow up to 30 times the initial one. Our air wipes are available in anodised aluminium, steel 304 and steel 316L. All models are provided with stainless steel screws and stainless steel shims.

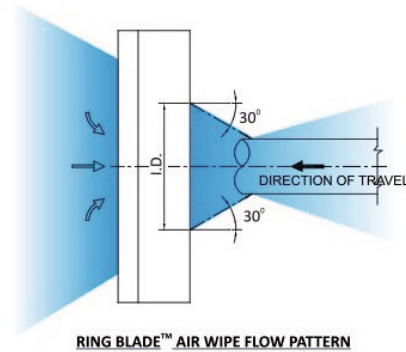
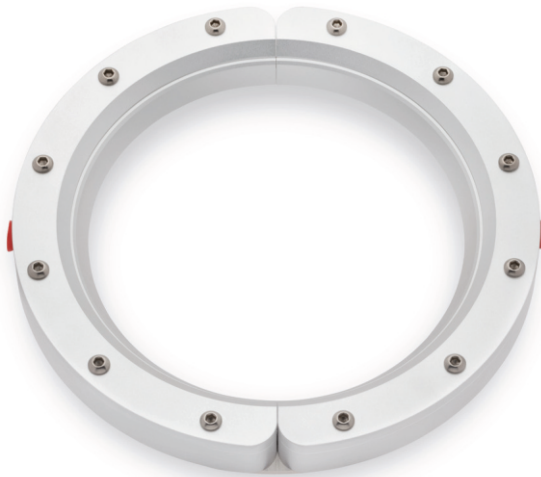


Internal diameter	178 mm
External diameter	248 mm
Dimensions	248 mm x 29 mm
Shims	Stainless Steel
Air consumption at 5 Bar	130 Nm ³ /h
Air Amplification	30:1
Sound level at 5 Bar	85 dB(A)
Connection type	Female
Side connections	1/4" x 2
Blowing pattern	Circular
Max operating pressure	10 Bar

www.air-masters.eu info@air-masters.eu Tel. Tel. +44 8006893125

AIR WIPE AIR-AW09 ØINT. 229MM

AirMasters air wipes are ideal to clean, cool and dry cables, pipes, extrusions, hoses, wires and ropes. They are easy to mount and maintain and reduce both compressed air consumption and noise levels. Producing a "laminar" flow of air along its 360° angle using the Coanda effect which entrains a large volume of air from the surrounding area along with the small amount of compressed air to produce an output flow up to 30 times the initial one. Our air wipes are available in anodised aluminium, steel 304 and steel 316L. All models are provided with stainless steel screws and stainless steel shims.



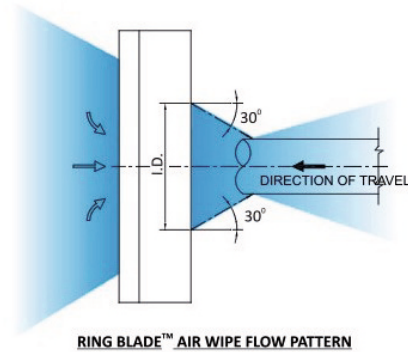
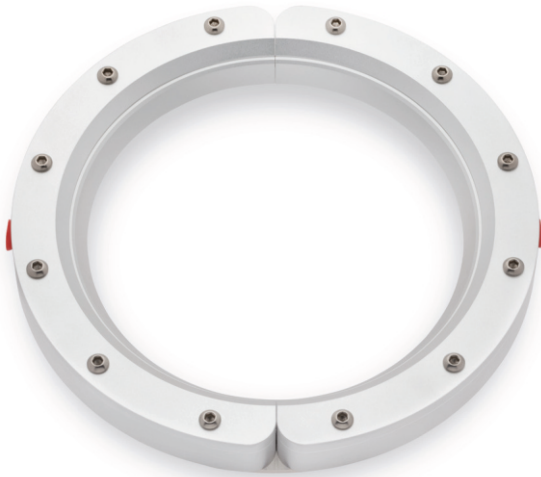
RING BLADE™ AIR WIPE FLOW PATTERN

Internal diameter	229 mm
External diameter	299 mm
Dimensions	299 mm x 29 mm
Shims	Stainless Steel
Air consumption at 5 Bar	165 Nm ³ /h
Air Amplification	30:1
Sound level at 5 Bar	87 dB(A)
Connection type	Female
Side connections	1/4" x 2
Blowing pattern	Circular
Max operating pressure	10 Bar

www.air-masters.eu info@air-masters.eu Tel. Tel. +44 8006893125

AIR WIPE AIR-AW11 ØINT. 279MM

AirMasters air wipes are ideal to clean, cool and dry cables, pipes, extrusions, hoses, wires and ropes. They are easy to mount and maintain and reduce both compressed air consumption and noise levels. Producing a "laminar" flow of air along its 360° angle using the Coanda effect which entrains a large volume of air from the surrounding area along with the small amount of compressed air to produce an output flow up to 30 times the initial one. Our air wipes are available in anodised aluminium, steel 304 and steel 316L. All models are provided with stainless steel screws and stainless steel shims.



RING BLADE™ AIR WIPE FLOW PATTERN

Internal diameter	279 mm
External diameter	349 mm
Dimensions	349 mm x 29 mm
Shims	Stainless Steel
Air consumption at 5 Bar	203 Nm ³ /h
Air Amplification	30:1
Sound level at 5 Bar	89 dB(A)
Connection type	Female
Side connections	1/4" x 2
Blowing pattern	Circular
Max operating pressure	10 Bar

www.air-masters.eu info@air-masters.eu Tel. Tel. +44 8006893125